

Geography: Why Does Antarctica Need a Champion?

Year 2 Spring 1

Key Facts and Vocabulary

Why should we learn about Antarctica?

Antarctica is the coldest place in the world, so cold that no humans live there. It is the only continent where humans have not built settlements and this makes it a very special place for scientists to study. The ice in Antarctica is also very important because it helps to maintain the Earth's temperature and protect us from the sun's rays.

The Antarctic Treaty is an agreement that the countries of the world will only use Antarctica for peaceful purposes. It isn't owned by any single country; instead, it is agreed that scientists will work together. Animal hunting is banned and armies are only allowed to enter for peaceful purposes.

Antarctica



Antarctica is located in the southern hemisphere around the South Pole.



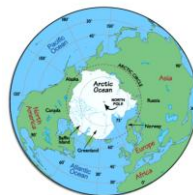
Antarctic Vocabulary

Ice berg - a large floating mass of ice.
Ice sheet - a thick layer of ice covering an area of land for a long time.

Arctic



The Arctic is located in the northern hemisphere around the North Pole.



Arctic Vocabulary

Ocean - a huge body of salt water.
Northern lights - a natural display of lights in the night sky.

Sahara



The Sahara Desert is located in the continent of Africa.



Sahara Vocabulary

Desert - a desert is a barren area where little precipitation (rain or snow) occurs. Deserts can be hot or cold. **Both the Sahara and Antarctica are deserts.**

Enquiry Questions

- How is the ocean different at the north pole and the equator?
- Where are the world's cold places?
- What is the geography of Antarctica like?
- What does it sound like in Antarctica?
- How does Antarctica compare with the Sahara Desert?
- Why is Antarctica important and how can we protect it?

Geographical Concepts

Place - having a sense of place means understanding what this place is like.
Scale - understanding the big picture as well as our experiences in day to day life. The concept of scale is about the way that geographical phenomena and problems can be examined at different spatial levels.

Geographical Skills

- Explain what makes a locality special.
- Describe a place outside Europe using geographical words.
- Name the continents of the world and find them in an atlas.
- Use 4-point compass directions (north, south, east and west).

Why don't you...

- Create your own world map at home? You could use different materials to represent the different continents.
- Create your own Antarctic scene in shoe box?
- Write a story about a polar bear that tries to visit Antarctica? What might they see as they travel?

Website Links

- <https://www.bbc.co.uk/bitesize/topics/zyhp34j/articles/zig46v4>
- <https://kids.nationalgeographic.com/videos/topic/destination-world#6b97f961-c870-4336-915f-7e437e9e46c4>